



# INTERNATIONAL GEMOLOGICAL INSTITUTE

## LABORATORY GROWN DIAMOND REPORT

March 22, 2022

IGI Report Number

LG516260560

Description

Shape and Cutting Style

Measurements

**GRADING RESULTS**

Carat Weight

Color Grade

Clarity Grade

Cut Grade

**ADDITIONAL GRADING INFORMATION**

Polish

Symmetry

Fluorescence

Inscription(s)

Comments: This Laboratory Grown Diamond was created by Chemical Vapor Deposition (CVD) growth process and may include post-growth treatment.  
Type Ila

LABORATORY GROWN DIAMOND  
ROUND BRILLIANT  
7.70 - 7.76 X 4.82 MM

1.80 CARAT

F

VVS 2

EXCELLENT

EXCELLENT

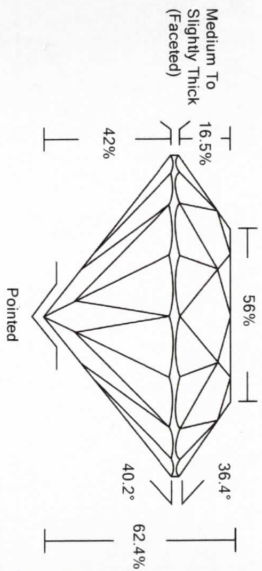
EXCELLENT

NONE

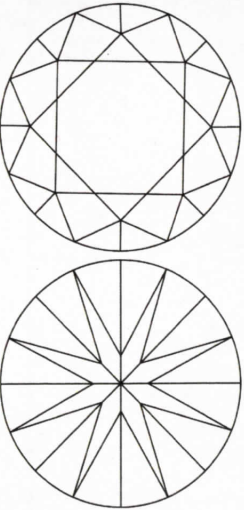
LABGROWN IGI LG516260560

LG516260560

### PROPORTIONS



### CLARITY CHARACTERISTICS



### KEY TO SYMBOLS

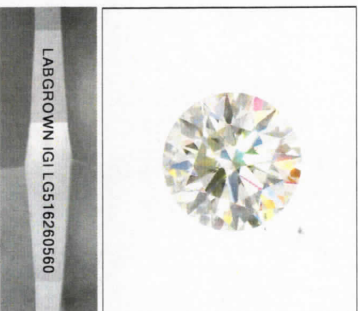
Red symbols indicate internal characteristics.  
Green symbols indicate external characteristics.

### GRADING SCALES

COLOR GRADING SCALE	CL	NC	FT	VLT	LT
COLORLESS D-F	NEAR COLORLESS G-J	FANT K-M	VERY LIGHT N-R	LIGHT S-Z	

CLARITY (10x) GRADING SCALE	FL	IF	VVS	VS	SI	I
FLAWLESS INTERNALLY	VERY VERY SLIGHTLY INCLUDED	VERY SLIGHTLY INCLUDED	SLIGHTLY INCLUDED	INCLUDED		



Sample Image Used

