



# INTERNATIONAL GEMOLOGICAL INSTITUTE

## LABORATORY GROWN DIAMOND REPORT

LG457051433

# LABORATORY GROWN DIAMOND REPORT

## GRADING SCALES

CLARITY	IF	VS <sup>1-2</sup>	VS <sup>1-2</sup>	S <sup>11-2</sup>	I <sup>1-3</sup>
Internally Flawless	Very Very Slightly Included	Very Slightly Included	Slightly Included	Included	

## COLOR

D E F G H I J Fairly Very Light Light

January 27, 2021  
IGI Report Number  
Shape and Cutting Style

LG457051433  
SQUARE EMERALD CUT

Measurements  
7.41 X 7.34 X 4.85 MM

## GRADING RESULTS

Carat Weight  
2.554 Carats

Color Grade  
G

Clarity Grade  
VS 1

## ADDITIONAL GRADING INFORMATION

Polish  
EXCELLENT

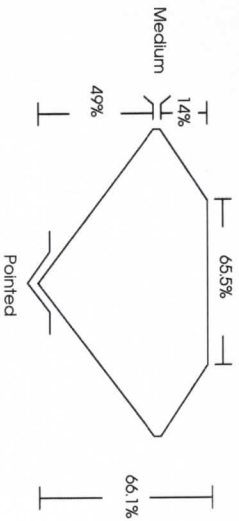
Symmetry  
VERY GOOD

Fluorescence  
NONE

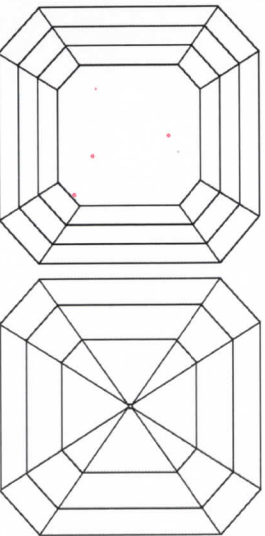
Inscription(s)  
LABGROWN IGI LG457051433

Comments: This Laboratory Grown Diamond was created by Chemical Vapor Deposition (CVD) growth process and may include post-growth treatment.

## PROPORTIONS



## CLARITY CHARACTERISTICS



## KEY TO SYMBOLS

Red symbols indicate internal characteristics.  
Green symbols indicate external characteristics.

The laboratory grown diamond described in this Report ("Report") has been graded, tested, analyzed, examined and/or inscribed by International Gemological Institute (IGI). A laboratory grown diamond is one that has essentially the same chemical, physical and optical properties as a natural diamond, but is produced by a controlled process (e.g., CVD (chemical vapor deposition) or by HPHT (high pressure high temperature) growth processes and may include post-growth treatments to alter the color. IGI employs and utilizes those techniques and equipment currently available to IGI, including, without limitation, 10X magnification, corrected triplet loupe, binocular microscope, master color comparison stones, non-contact-optical measuring device, Spectrophotometer and such other instruments and/or processes as deemed appropriate by IGI. In these methods and procedures, the diamond being analyzed is not subjected to any treatment that would alter the diamond's natural or laboratory created origin. A duly accredited gemologist or jeweler can advise you with respect to the importance of and interrelationship between cut, color, clarity and carat weight.

**THIS REPORT IS NEITHER A GUARANTEE, VALUATION, NOR APPRAISAL OF THE GEMSTONE DESCRIBED HEREIN. PLEASE REVIEW THE LIMITATIONS AND RESTRICTIONS SET FORTH ONLINE FOR ADDITIONAL INFORMATION, IMPORTANT LIMITATIONS AND DISCLAIMERS. PLEASE GO TO WWW.IGI.ORG/TERMS.HTML OR CALL 1-888-807-1165.**

© INTERNATIONAL GEMOLOGICAL INSTITUTE, INC.

Verify this report at

[www.igi.org](http://www.igi.org)

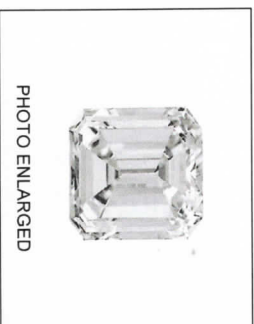


PHOTO ENLARGED



LASERSCRIBE SM



THIS DOCUMENT WAS PRODUCED WITH THE FOLLOWING SECURITY MEASURES: SPECIAL DOCUMENT PAPER, INK SCREEN, WATERMARK, PROPRIETARY DESIGN, HOLOGRAM AND OTHER SECURITY FEATURES. USE AND DO NOT REMOVE DOCUMENT SECURITY FEATURES OR OTHER MARKS.

For Terms & Conditions, please visit [www.igi.org](http://www.igi.org)

IGD - 01.20

